

# Queensway Environmental Improvement Scheme

## Frequently Asked Questions

### 1. Why is the scheme required?

Following Queens Square's regeneration, the next phase of Crawley's [Town Centre Regeneration Programme](#) will extend the public space improvements along Queensway, to Kings Gate, Memorial Gardens and The Pavement.

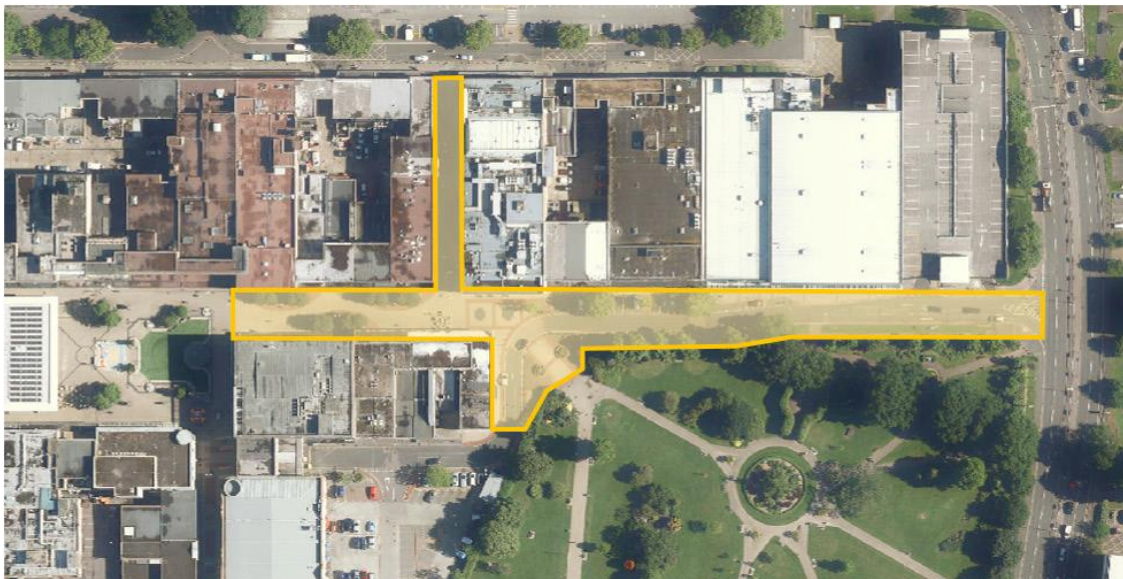
Crawley Town Centre's public realm is past its best and is in need of a facelift if it is to remain an enjoyable and safe place for residents and visitors to use over the coming years.

Improvements to this area are also hoped to act as a catalyst for further regeneration. This has already been seen in Queens Square where a number of empty properties have been brought back into use including Decathlon, Tapi Carpets and the soon to open Days in spring.

This scheme is part of the Crawley Growth Programme, a £60million investment in local infrastructure projects which will enable sustainable growth in jobs, business space and homes across the town centre and Manor Royal Business District.

### 2. Where is the scheme?

The scheme covers the whole of Queensway, The Pavement, Kingsgate, and Parkside in Crawley town centre. It also encompasses the northern edge of Memorial Gardens.



### **3. What does the scheme include?**

The scheme includes new paving; street furniture; planting in Memorial Gardens; infrastructure for a market; and improved disabled parking provision.

### **4. What will the scheme cost to implement and how is it funded?**

The estimated cost for implementing the scheme is £2.2million funded through the Crawley Growth Programme. The Crawley Growth programme is delivered by a major partnership of public and private organisations, including the Coast to Capital Local Enterprise Partnership, West Sussex County Council, Crawley Borough Council, Metrobus, Gatwick Airport Limited, Manor Royal Business Improvement District (BID) Company, the Arora Group, Gatwick Diamond Initiative and Crawley Town Centre Partnership.

### **5. Who is delivering the project?**

As part of the Crawley Growth Programme; Crawley Borough Council are the lead authority for the project and contract management for the proposed improvements.

### **6. When will the scheme be built?**

Works will start in January 2019 and are due to be completed in autumn 2019.

### **7. Will the visitors and residents be affected during construction?**

We have carefully planned the works to avoid the busy Christmas periods, reducing impact on nearby retailers. All businesses will remain open during construction.

Once a contractor has been appointed a detailed construction plan will be produced. Businesses, residents and visitors will be informed of plans at the earliest opportunity via the Regenerating Crawley website, or will be contacted directly.

**8. Will the road remain open during the work?**

It is hoped the road will remain open throughout the works, however, until the main contractor is appointed and detailed designs are approved, the Traffic Management Plan cannot be confirmed. Every effort will be made to minimise the impact on the road network on all road users.

**9. Will access for pedestrians be maintained during the works?**

Footpaths will remain open wherever possible. We will provide advance notice and alternative directions in the event of a footpath closure.

**March 2018**